



E-Ras Polyclonal Antibody

Catalog No	YP-Ab-16156
Isotype	IgG
Reactivity	Human;Rat;Mouse;
Applications	WB;IF;ELISA
Gene Name	ERAS
Protein Name	GTPase Eras
Immunogen	The antiserum was produced against synthesized peptide derived from human ERAS. AA range:184-233
Specificity	E-Ras Polyclonal Antibody detects endogenous levels of E-Ras protein.
Formulation	Liquid in PBS containing 50% glycerol, 0.5% BSA and 0.02% sodium azide.
Source	Polyclonal, Rabbit,IgG
Purification	The antibody was affinity-purified from rabbit antiserum by affinity-chromatography using epitope-specific immunogen.
Dilution	Western Blot: 1/500 - 1/2000. Immunofluorescence: 1/200 - 1/1000. ELISA: 1/20000. Not yet tested in other applications.
Concentration	1 mg/ml
Purity	≥90%
Storage Stability	-20°C/1 year
Synonyms	ERAS; HRAS2; HRASP; GTPase ERas; E-Ras; Embryonic stem cell-expressed Ras
Observed Band	25kD
Cell Pathway	Cell membrane ; Lipid-anchor ; Cytoplasmic side .
Tissue Specificity	Brain,
Function	enzyme regulation:Alternate between an inactive form bound to GDP and an active form bound to GTP. Activated by a guanine nucleotide-exchange factor (GEF) and inactivated by a GTPase-activating protein (GAP).,function:Ras proteins bind GDP/GTP and possess intrinsic GTPase activity. Plays an important role in the tumor-like growth properties of embryonic stem cells.,similarity:Belongs to the small GTPase superfamily. Ras family.,subunit:Interacts with PIK3CD.,
Background	This gene encodes a constitutively active member of the small GTPase Ras protein family. The encoded protein activates the phosphatidylinositol 3-kinase signal transduction pathway in undifferentiated stem cells, but is not expressed in differentiated cells. This gene may be involved in cancer and chemotherapy resistance. [provided by RefSeq, Dec 2012],



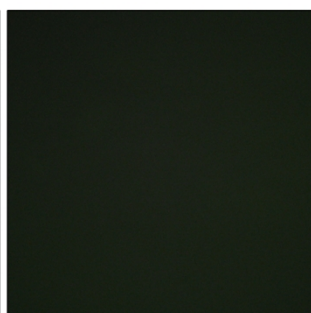
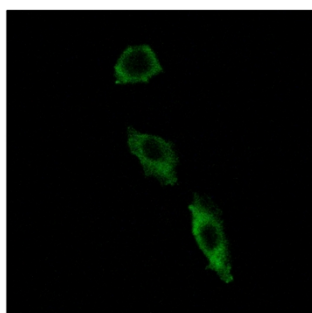
matters needing attention

Avoid repeated freezing and thawing!

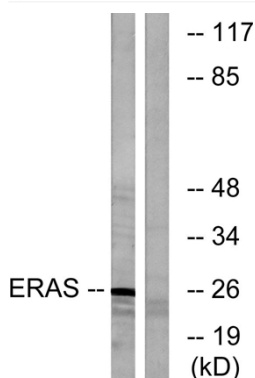
Usage suggestions

This product can be used in immunological reaction related experiments. For more information, please consult technical personnel.

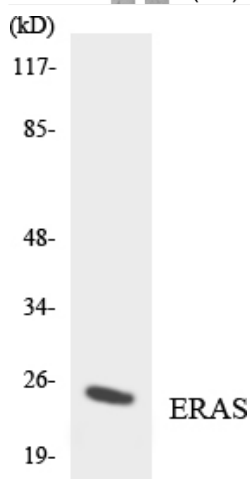
Products Images



Immunofluorescence analysis of A549 cells, using ERAS Antibody. The picture on the right is blocked with the synthesized peptide.



Western blot analysis of lysates from Jurkat cells, using ERAS Antibody. The lane on the right is blocked with the synthesized peptide.



Western blot analysis of the lysates from HeLa cells using ERAS antibody.